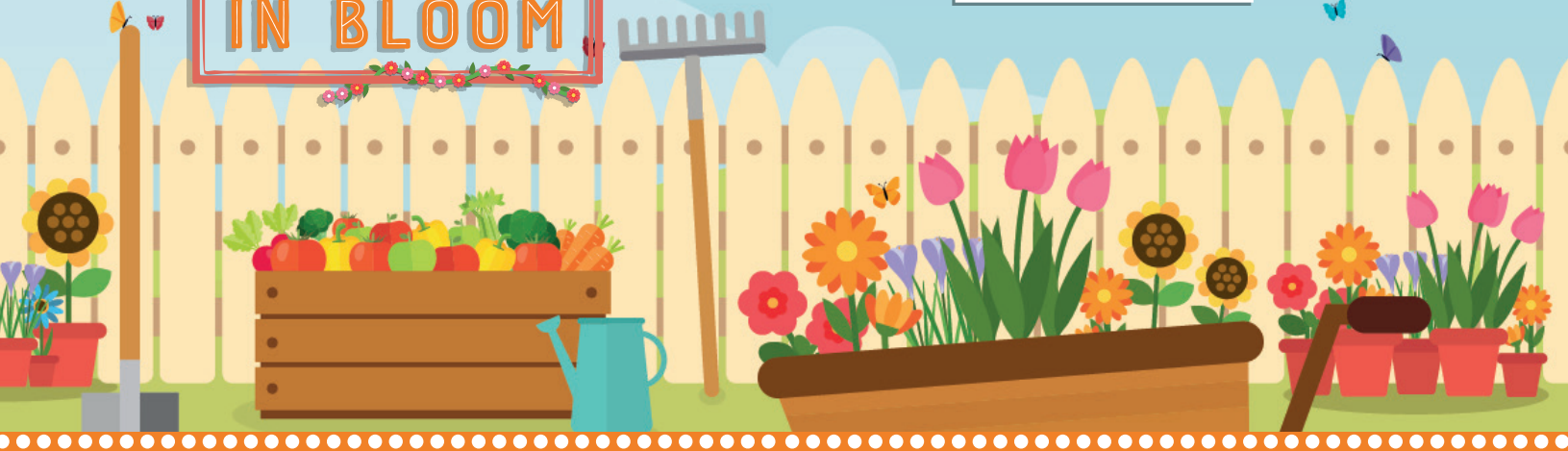




CLOSING DATE
FRIDAY 28TH
JUNE 2019



WHAT'S IT ALL ABOUT?

'Ryde in Bloom' is an opportunity for gardeners, and those that are concerned about the environment, to brighten up their gardens and community spaces and possibly win prizes! It's not just about flowers – we're looking for environmentally-friendly, attractive and sustainable planting. Entry is free, so why not dig out those gardening tools and add to the growing success of Ryde.

HOW TO ENTER

Please fill in the entry form below and send it to the Town Council Offices. Email entries will also be accepted.

Judging will take place during the summer months. The results of the competition will be announced at a presentation evening in the Autumn.

ENTRY IS FREE, SO WHY NOT DIG OUT THOSE GARDENING TOOLS AND ADD TO THE GROWING SUCCESS OF RYDE. CLOSING DATE FRIDAY 28TH JUNE 2019.

THE CATEGORIES ARE...

1. BEST INDIVIDUAL GARDEN – PRIVATE RESIDENCES

An individual household may enter their garden which is visible to the public from the pavement.

2. BEST USE OF LIMITED SPACE – PRIVATE RESIDENCES

An individual household may enter a small front garden/balcony or paved garden, under 3 metres in depth.

3. BUSINESSES AND COMMERCIAL PREMISES INCLUDING SHOPS, PUBS, RESTAURANTS AND GUEST HOUSES

Retail frontage – use of flowers / garden space to create a display / garden of which is visible to the public.

4. COMMUNITY GROUPS

Local non-profit organisations use of community spaces, gardens or community planting.

5. TOURIST ATTRACTIONS

Best floral display at a public place of interest. e.g. Caravan Parks, museums or tourist attractions.

6. SCHOOLS

Our school's competition invites all of Ryde's schools to create an allotment style garden using this year's theme "Healthy Eating and Healthy Living".

7. ALLOTMENT OF THE YEAR

Entries are invited from plot holders on each of the towns' allotment sites to put forward their best plots.

8. YOUNG PERSONS

To design and create an innovative garden. The planting of the feature must be done by young people and the main emphasis of the judging will be on the practical gardening skills used, environmental awareness and creativity. Gardens can come in all shapes and sizes, create anything from as small as a dinner plate to as large as a whole garden. Let your imagination run wild!



ENTRY FORM

Please return entry form no later than
Friday 28th June 2019

Please send entries to:

Ryde in Bloom, Ryde Town Council
Town Hall Chambers
10 Lind Street, Ryde
Isle of Wight PO33 2NQ
Tel: (01983) 811105
E: facilities@rydetowncouncil.gov.uk
W: rydetowncouncil.gov.uk

I wish to enter category No.

Name

Tel No

Full Address

Postcode

Please tick if you consent to have your personal contact details (as outlined on this application form) held by the Town Council for the minimum of 1 year.

I understand these details will need to be passed to the judging panel.

Please tick if you do not want your details to be used for publicity purposes.