

Have your say:

We are now consulting local people on a new pattern of divisions for Isle of Wight Council. We have an open mind about our final recommendations, and we will consider every piece of evidence we receive from local groups and people, regardless of whom it is from or whether it relates to the whole council area or just a part of it.

If you agree with our recommendations, please let us know. If you don't think our recommendations are right for the Isle of Wight, we want to hear alternative proposals for a different pattern of divisions.

Isle of Wight Council

Draft recommendations on the new electoral arrangements

We aim to propose a pattern of divisions for the Isle of Wight which delivers:

- **Electoral equality:** each councillor represents a similar number of voters.
- **Community identity:** reflects the identity and interests of local communities.
- **Effective and convenient local government:** helping your council discharge its responsibilities effectively.

A good pattern of divisions should:

- Provide good electoral equality, with each councillor representing, as closely as possible, the same number of voters.
- Reflect community interests and identities and include evidence of community links.
- Be based on strong, easily identifiable boundaries.
- Help the council deliver effective and convenient local government.

- **Facilities:** does your pattern of divisions reflect where local people go for shops, medical services, leisure facilities etc?
- **Interests:** what issues bind the community together or separate it from other parts of your area?
- **Identifiable boundaries:** are there natural or constructed features which make strong boundaries for your proposals?

Effective local government:

- Are any of the proposed divisions too large or small to be represented effectively?
- Are the proposed names of the divisions appropriate?

Useful tips:

- Our website has a special consultation area where you can explore the maps and draw your own proposed boundaries. You can find it at consultation.lgbce.org.uk.
- We publish all submissions we receive on our website. Go to: www.lgbce.org.uk

Electoral equality:

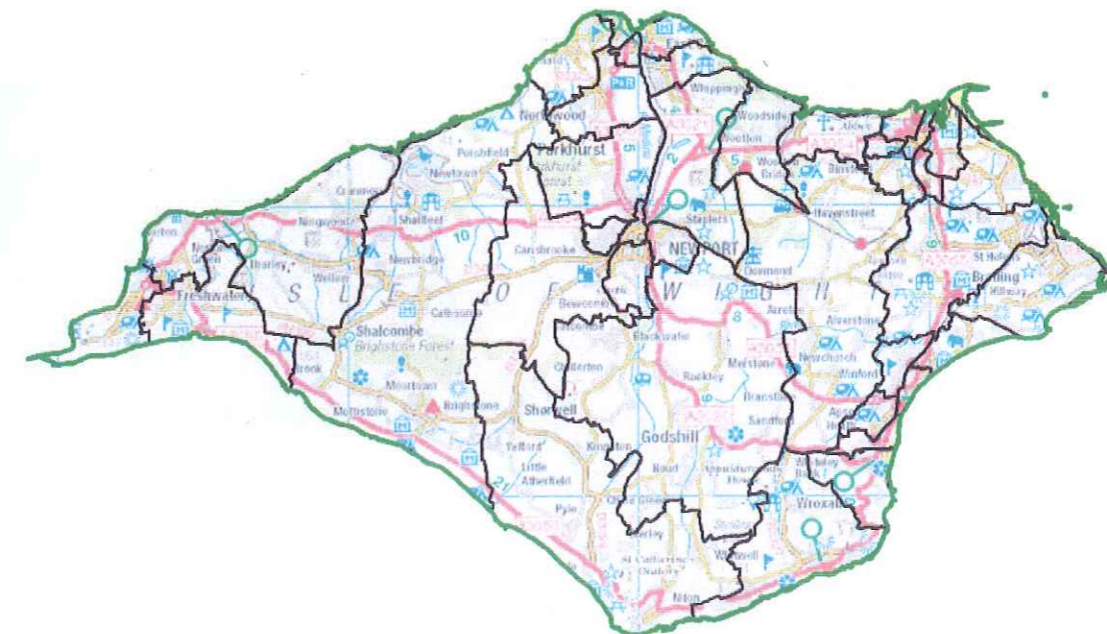
- Does your proposal mean that councillors would represent roughly the same number of voters as elsewhere in the council area?

Community identity:

- **Transport links:** are there good links across your proposed division? Is there any form of public transport?
- **Community groups:** is there a parish council, residents association or another group that represents the area?

Write to:
Review Officer (Isle of Wight)
LGBCE
1st Floor, Windsor House
50 Victoria Street, London
SW1H 0TL

Our consultation area:
consultation.lgbce.org.uk
Email:
reviews@lgbce.org.uk
Twitter:
@LGBCE



Who we are:

- The Local Government Boundary Commission for England is an independent body set up by Parliament.
- We are not part of government or any political party.
- We are accountable to Parliament through a committee of MPs chaired by the Speaker of the House of Commons.
- Our main role is to carry out electoral reviews of local authorities throughout England.

Electoral review:

- An electoral review examines and proposes new electoral arrangements for a local authority, including:
- The total number of councillors representing the council's voters ('council size').
 - The names, number and boundaries of wards or electoral divisions.
 - The number of councillors for each ward or division.

Why Isle of Wight?

- The Isle of Wight currently has high levels of electoral inequality: some councillors represent many more - or many fewer - voters than others.
- Therefore the value of your vote, in Isle of Wight council elections, varies depending on where you live in the Isle of Wight.

Our proposals:

- Isle of Wight currently has 40 councillors.
- We propose that the council should have **39 councillors** in future, representing 1 two-councillor division and 37 one-councillor divisions across the council area.

You have until 12 November 2018 to have your say on the recommendations

Summary of our recommendations

We have considered all the representations received in response to our request for division proposals.

Our draft recommendations propose that Isle of Wight should have **39 councillors** in future. This is **1 fewer than** the current number of councillors.

Those councillors should represent 1 two-councillor division and 37 one-councillor divisions, across the council area.

The Isle of Wight Council should have 38 divisions, one fewer than there are now. The boundaries of 34 divisions should change, five will stay the same.

An outline of the proposals is shown in the map to the right. A detailed report on the recommendations and interactive mapping is available on our website at: www.lgbce.org.uk.

We welcome comments on our draft recommendations, whether you support the proposals or wish to put forward alternative arrangements.

In particular, we welcome proposals for alternative boundaries or division names which meet the criteria we must follow as part of electoral reviews and which are described in more detail over the page.

Have your say at
consultation.lgbce.org.uk:

- view the map of our recommendations down to street level.
- draw your own boundaries online.
- zoom into the areas that interest you most.
- find more guidance on how to have your say.
- read the full report of our recommendations.
- send us your views directly.

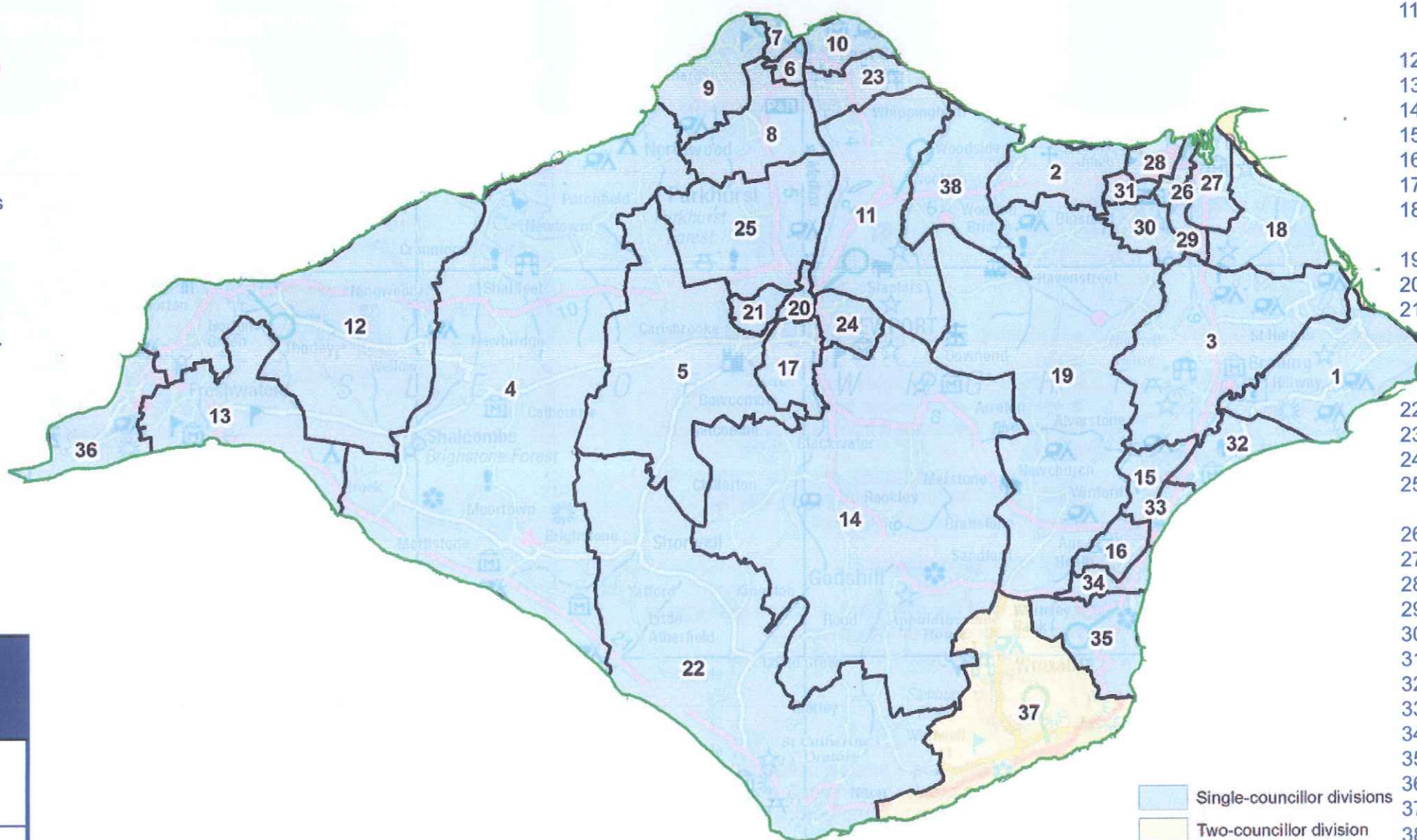
Stage of review	Description
1 May 2018 - 9 July 2018	Public consultation on new division boundaries
4 September 2018 - 12 November 2018	Public consultation on draft recommendations
5 February 2019	Publication of final recommendations
May 2021	Subject to parliamentary approval - implementation of new arrangements at local elections

Overview of draft recommendations for Isle of Wight

View this map online and draw your own boundaries:
consultation.lgbce.org.uk

Follow the review on Twitter: [@LGBCE](https://twitter.com/LGBCE)

If you are viewing this page online, click on the map to go straight to our interactive consultation area.



Key:

- 1 Bembridge
- 2 Binstead and Fishbourne
- 3 Brading & St Helens
- 4 Brighstone
- 5 Carisbrooke & Gunville
- 6 Cowes Medina
- 7 Cowes North
- 8 Cowes South & Northwood
- 9 Cowes West & Gurnard
- 10 East Cowes
- 11 Fairlee & Whippingham
- 12 Freshwater North
- 13 Freshwater South
- 14 Godshill
- 15 Lake North
- 16 Lake South
- 17 Mountjoy & Shide
- 18 Nettlestone & Seaview
- 19 Newchurch
- 20 Newport Central
- 21 Newport West
- 22 Niton
- 23 Osborne
- 24 Pan & Barton
- 25 Parkhurst & Hunnyhill
- 26 Ryde Central
- 27 Ryde North East
- 28 Ryde North West
- 29 Ryde South East
- 30 Ryde South West
- 31 Ryde West
- 32 Sandown North
- 33 Sandown South
- 34 Shanklin Central
- 35 Shanklin South
- 36 Totland
- 37 Ventnor & Wroxall
- 38 Wootton Bridge

Single-councillor divisions
Two-councillor division